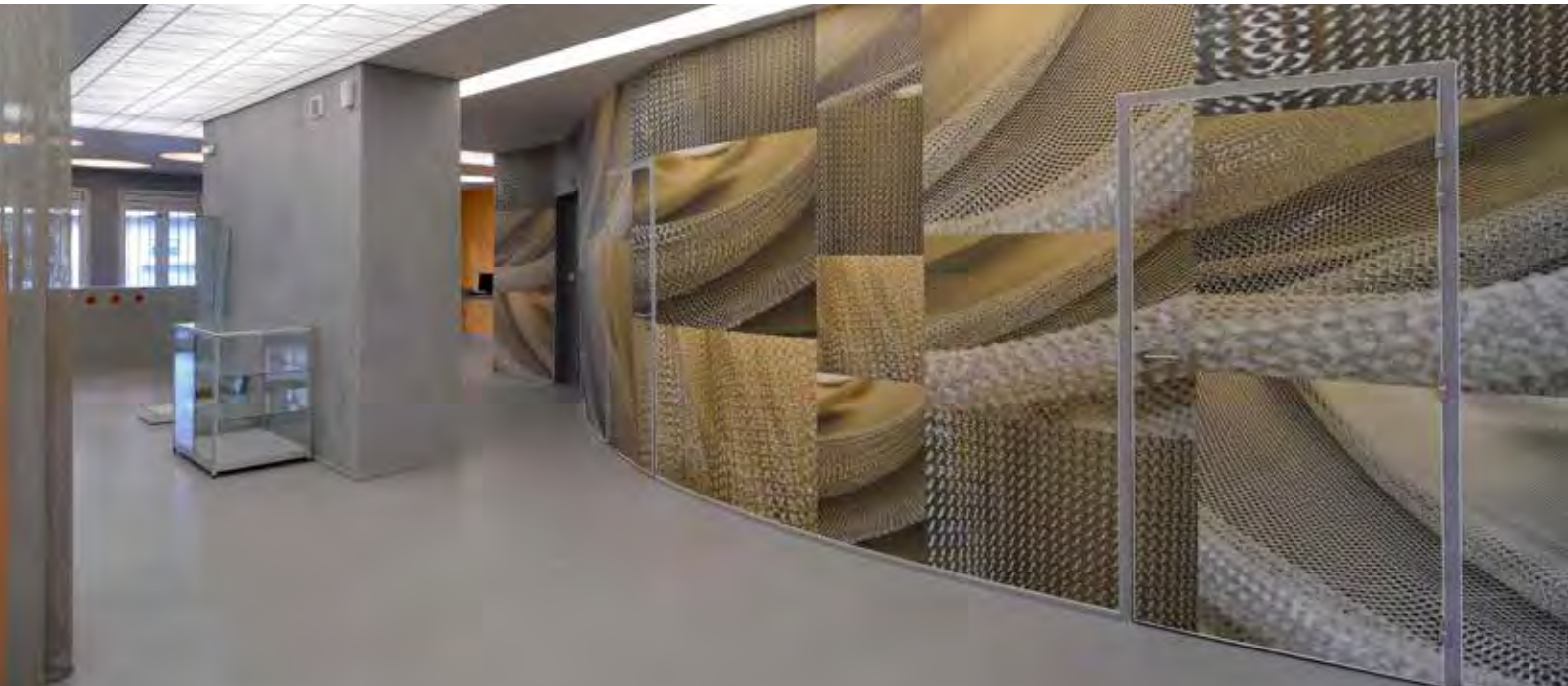


artolis[®] by BARRISOL[®]

Technical fabrics for your walls



CIRFA ©2012

Printed walls, digital painting,
panoramic decors and more

Dress up your walls

Technical textiles – wide width – high resistance – acoustic – HD printing



ref. BAE - Fleurs Cerisier du Japon

Choose **artolis**[®] for a unique design.

artolis[®] a complete range of technical textiles for interior design

To meet interior design requirements, **artolis**[®] offers a set of technical solutions in a wide width (up to 5m: without welds or sewing).

artolis[®] coatings are shock and impact resistant but are also perfectly adaptable for wall applications.

See data sheets.

An easy and fast installation

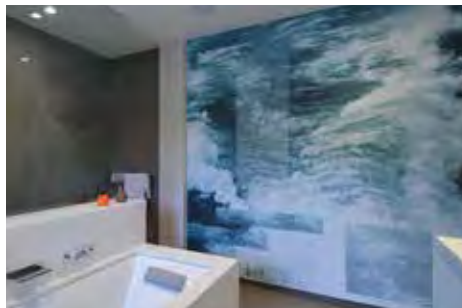
- + Profile installation to the perimeter of the zone to dress up
- + Coating tensioning in the profile thanks to the spatula

artolis[®] can be installed in few hours in an ambient temperature with no dust.

Technical elements such as switches or electric outlets are perfectly integrated within **artolis**[®] system.



showroom Decoranda | arch. d'intérieur : Kurt Wallayes



design Estrikor | Photo : Studio Rembrandt



ref. Mulhousian spirit of panoramic scenery

Design & acoustic performances



ref. Gravure ancienne - La forêt

ref. BAE - RMN - Anne d'Autriche

When combined with an acoustic absorbent from 1cm to 5cm, the **artolis** acoustic[®] coating offers a sound reduction, particularly for sound voices, and improves the acoustic comfort.

This represents an ideal acoustic solution for public places such as restaurants or offices.

It also offers a great acoustic comfort in private places where we can find picture windows for example.

acoustic design

Benefits:

- + Quality, resistance and acoustic performances
- + No more cracks
- + Clean and impeccable finishing
- + Fast installation
- + No welds or sewing - up to 5m high
- + Time resistance
- + Acoustic comfort
- + Thermal insulation
- + HQE label (High Environmental Quality)

Scope:

- + Renovations and new constructions
- + Individual houses and apartments
- + Commercial premises, stores...
- + Hotels and restaurants
- + Public places, meeting rooms, sport halls
- + Cinemas, theatres, home cinema
- + Humide and/or chlorinated places

Decoration and acoustic corrections



ref. City drawings - Les toits de Paris

Performances and low thickness

artolis acoustic[®] offers a wide range of high and very high acoustic performances, $a_w = 1.0$ plain or printed.

Coated textile membranes performances provide excellent results with very low thicknesses.

Example 1 : 50 mm thickness with 45 mm glass wool

Acoustic absorption ranking: **A or B**

a_w situated between 0,85 and 1.0

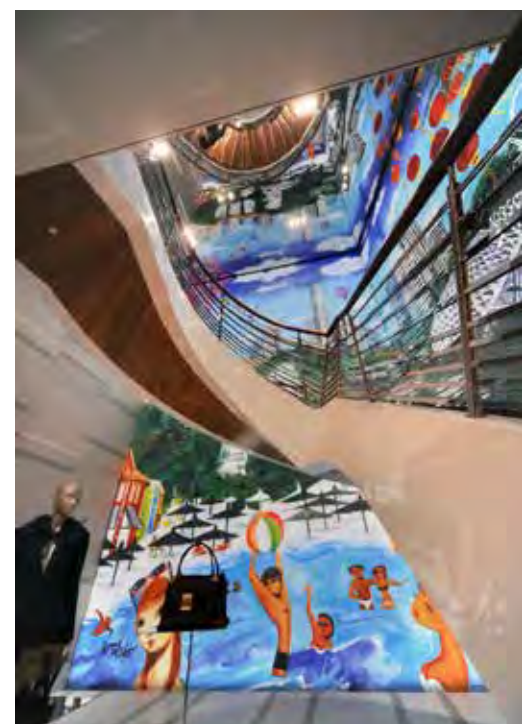
(see data sheets – acoustic results)

Example 2 : 10 mm thickness with a 600g/sqm fleece

Acoustic absorption ranking: **D**

a_w situated between 0,4 and 0,5

(see data sheets – acoustic results)



Centre commercial - Singapour | design Andy Lau

ref. BAE - Campagne anglaise XVIII^{ème}

ref. BAE - Light & Flower

Digital printing: a field of expertise

Thanks to HD digital printing technologies, your walls and ceilings can be printed with your own pictures (min. quality 360 dpi, 1/10th from the final format). They can be also printed thanks the **artolis** Editions[®], the largest pictures collection.

artolis[®] coatings offers no limit of printing possibilities, up to 5m width with no welds.

artolis lumière[®] printed sheet will let you combine picture and light to create original wall spaces.

A field of expertise is the guarantee of:

- + A quality of picture in million colours
- + A high definition (HD) 720 DPI
- + A very high definition (THD) 1440 DPI
- + Up to 5 m width and up to 50 m length
- + An internal graphic studio
- + A certified process FOGRA ISO 12647 to give you maximum guarantee.

A wide collection of pictures is available thanks to exclusive and prestigious partnerships: le Musée de l'Impression sur Etoffes (Museum of Printed Textiles), National Museums, le Louvre, Orsay, Versailles...

Designers, photographers and stylists develop every day the **artolis**[®] collection.

artolis[®] by BARRISOL[®]

Technical fabrics for your walls



ref. BAE - Gravure - Chambre Marie Antoinette



ref. Panoramique city view



The heartbeat of Innovation since 1967



P&I: B22/2/433 - 10000 ex - 12/2012 - COPYRIGHT © NORMALU BARRISOL S.A.S - Tous droits réservés.

www.artolis.eu

BARRISOL[®] - NORMALU[®] S.A.S

Route du Sipes 68680 Kembs - France

Tel. : +33 (0)3 89 83 20 20 | Fax : +33 (0)3 89 48 43 44

Email : mail@barrisol.com



union des fabricants **unifab**